

Improve Efficiency Through End-to-end Content and Process Automation

Upland's FileBound delivers document and workflow automation applications that improve the operation of any organization by connecting users with the information they need to work more efficiently and effectively.

With FileBound, customers can build automated workflow processes and centrally manage documents to improve compliance, collaboration and access to information. FileBound applications can be deployed locally or as a cloud-based service and have been implemented by organizations of all sizes around the world.

Benefits

Unlike legacy products, FileBound's simplified, flexible approach to usability, configurability and licensing delivers fast, game-changing results:

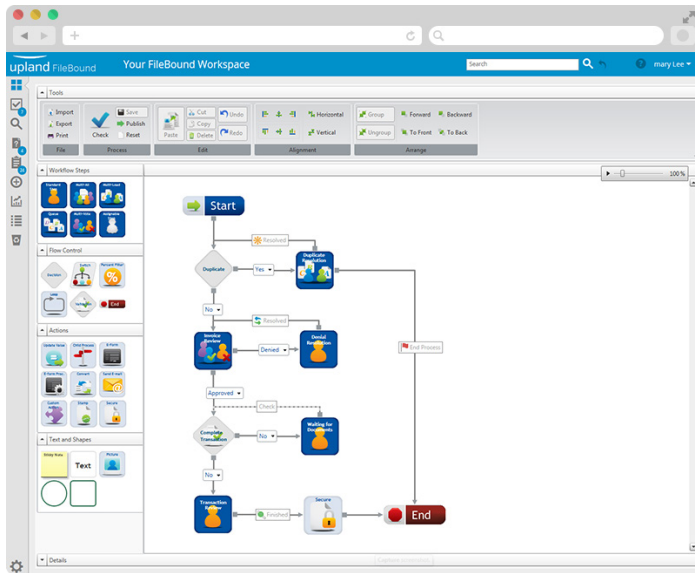
- **Easy-to-use configuration tools** give you greater control and agility by reducing reliance on IT when responding to changing business needs
- **Device-agnostic mobile solutions** seamlessly support BYOD policies and remote users at no additional cost
- **Predictive Analytics tools** provide meaningful, timely and actionable insights into all workflow processes to harness the full value of the data to make better business decisions
- **Contemporary interface design** makes it easy to adapt to automation technology and controls what you see when logging on, making it easier to complete work
- **Easy-to-understand, all-in-one licensing options** meet the needs of businesses of all kinds
- **Strong integration capabilities** allow you to build end-to-end automation solutions that maximize productivity by eliminating "data silos"

"FileBound's workflow and document management solutions empowered us to be able to unburden our staff regarding those manual, time consuming duties that filled their days. Now, our employees can spend more time on tasks that matter most for the community we serve. After all, we're here to help people — not to focus on paperwork."

— **Germaine Gross, Vice President of Finance & Administrative Services, Volunteers of America Greater New Orleans**

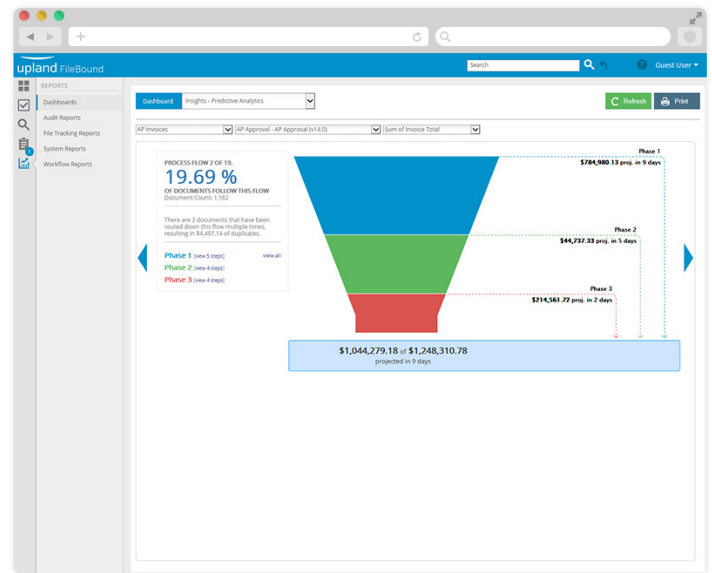
Workflow Automation

Automated workflow functionality allows your organization to reengineer and streamline work processes.



Decision-Making Intelligence

Turn workflow data into decision-making intelligence with analytics that deliver meaningful, timely, actionable business insights into all work processes.



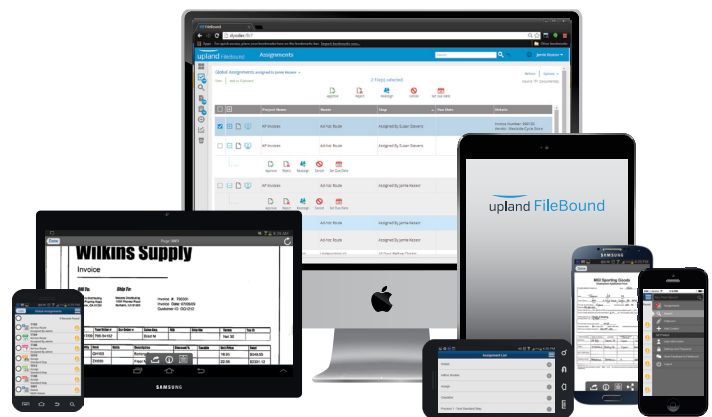
Drag & Drop Electronic Form Creation

In just minutes, create forms with drag and drop ease to collect data from anyone, anywhere.

The screenshot shows the 'upland FileBound' form creation interface. On the left is a 'Toolbox' with categories: 'Static Text' (Label, Page heading, Paragraph), 'Input Fields' (Single Line Text, Multi-Line Text, Date, Signature), 'Buttons and Actions' (Button, Drop Down, checkbox, Image, File Upload, Radio Button, URL), and 'Layout' (Horizontal Rule). The main area is a 'Preview' of an 'Application for Employment' form with fields for Contact information (First Name, Last Name, Address, City, State, Zip code, E-Mail, Date, Phone #), Position Applying For, and Education (High School, College, Major, Year Graduated, Did You Graduate?).

Mobile Support

Support BYOD with a superior user experience, however and wherever you want to access FileBound.



About Upland Software

Upland Software (Nasdaq: UPLD) is an enterprise cloud software company that provides award-winning solutions in Project and IT Management, Workflow Automation and Digital Engagement. Our goal is 100% customer success, achieved through a unified operating platform that delivers the performance, scalability and support that over 2,500 Upland customers worldwide demand every day.